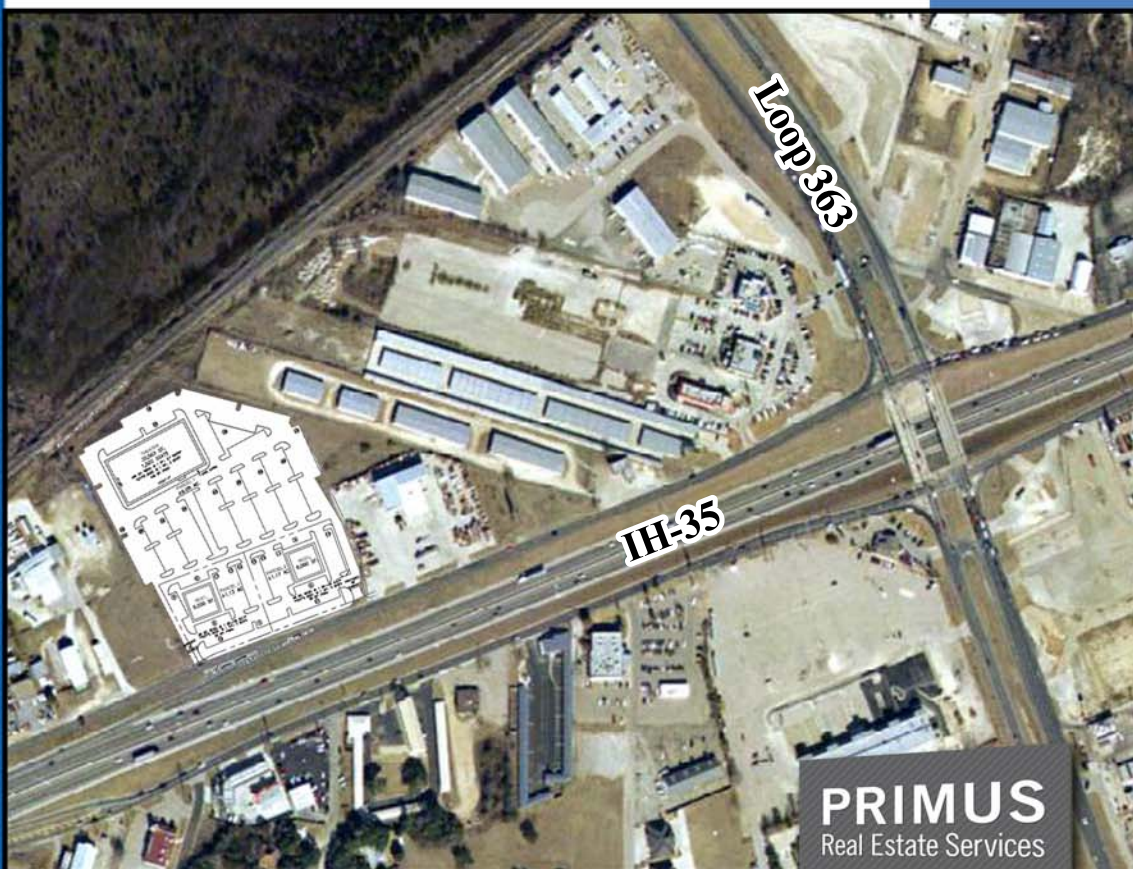


TEXAS  
TEMPLE



**PRIMUS**  
Real Estate Services



## Primus Real Estate Services

1508 West 5th Street  
Suite 102  
Austin, TX 78703  
(512) 322-2008 • (888) 324-2008

The information contained herein was obtained from sources deemed reliable; however, Primus Real Estate Services, LLP makes no warranties, guarantees, or representations as to the completeness or accuracy thereof. The presentation of this property is submitted subject to errors; omissions; change of price, prior to sale or lease; or withdrawal without notice.



**8.36 Acres for Sale or Lease**

**Temple, Texas**

**Location:** Southwest corner of IH-35 and Loop 363

**Size:** 8.36 Acres (can be divided)

<b>Suggested Pad Sizes:</b>	Lot 1: 6.06 Acres	<b>Price:</b>	Lot 1: \$6.00 Per SF
	Lot 2: 1.13 Acres		Lot 2: \$20.00 Per SF
	Lot 3: 1.17 Acres		Lot 3: \$20.00 Per SF

**2007 Population:** 3 mile: 42,370  
5 mile: 63,357  
10 mile: 95,108

**2007 Avg. HH Income:** 3 mile: \$57,591  
5 mile: \$58,040  
10 mile: \$60,412

**Est. Traffic Count:** Approximately 88,000 vehicles per day on IH-35. (2005)  
Approximately 46,000 vehicles per day on Loop 363. (2005)

**Comments:** Area retailers include Target, Home Depot, Best Buy, Michaels, Office Max, PetSmart, and Office Depot.

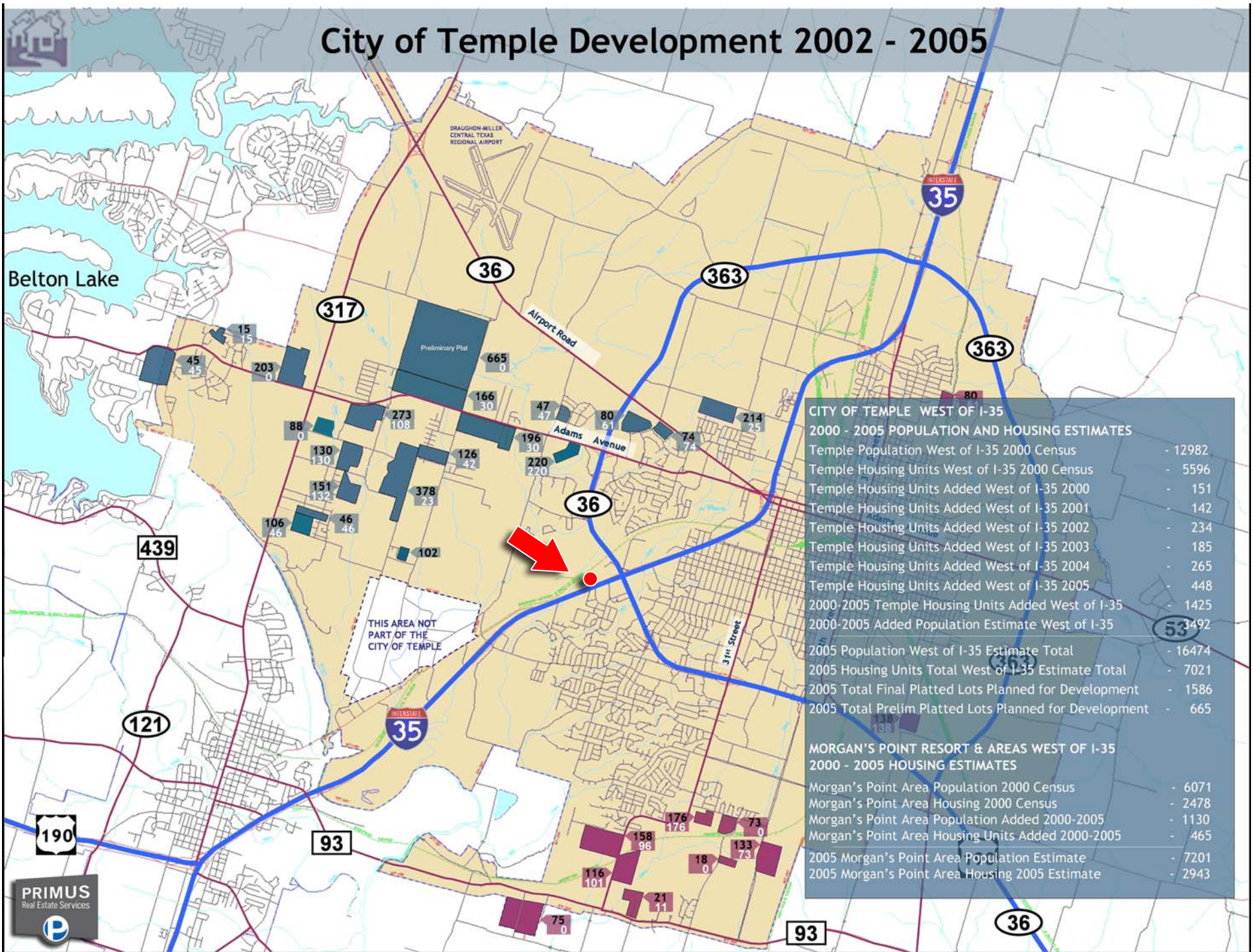
Area restaurants include Chili's, IHOP, McDonald's, BJ's  
Brewhouse, Olive Garden and Taco Cabana.

Contact: **Nate Nickerson**

**512-322-2008 / [nate@primusre.com](mailto:nate@primusre.com)**  
More information at: [www.primusre.com](http://www.primusre.com)

The information contained herein was obtained from sources deemed reliable; however, Primus Real Estate Services, LLP makes no guarantees, warranties or representations as to the completeness or accuracy thereof. The presentation of this property is subject to errors; omissions; change of price, prior to sale or lease; or withdrawal without notice.

# City of Temple Development 2002 - 2005



CITY OF TEMPLE WEST OF I-35	
2000 - 2005 POPULATION AND HOUSING ESTIMATES	
Temple Population West of I-35 2000 Census	- 12982
Temple Housing Units West of I-35 2000 Census	- 5596
Temple Housing Units Added West of I-35 2000	- 151
Temple Housing Units Added West of I-35 2001	- 142
Temple Housing Units Added West of I-35 2002	- 234
Temple Housing Units Added West of I-35 2003	- 185
Temple Housing Units Added West of I-35 2004	- 265
Temple Housing Units Added West of I-35 2005	- 448
2000-2005 Temple Housing Units Added West of I-35	- 1425
2000-2005 Added Population Estimate West of I-35	- 3492
2005 Population West of I-35 Estimate Total	- 16474
2005 Housing Units Total West of I-35 Estimate Total	- 7021
2005 Total Final Platted Lots Planned for Development	- 1586
2005 Total Prelim Platted Lots Planned for Development	- 665
MORGAN'S POINT RESORT & AREAS WEST OF I-35	
2000 - 2005 HOUSING ESTIMATES	
Morgan's Point Area Population 2000 Census	- 6071
Morgan's Point Area Housing 2000 Census	- 2478
Morgan's Point Area Population Added 2000-2005	- 1130
Morgan's Point Area Housing Units Added 2000-2005	- 465
2005 Morgan's Point Area Population Estimate	- 7201
2005 Morgan's Point Area Housing 2005 Estimate	- 2943



# Land for Sale or Lease Temple, Texas

**TARGET**  
**THE HOME DEPOT**  
**BEST BUY**  
**PETSMART**  
**Michaels**  
**OfficeMax**

665 Platted  
0 Built

166 Platted  
30 Built

196 Platted  
30 Built

West Adams

220 Platted  
220 Built

Loop 363  
(40,000 Cars)

214 Platted  
25 Built

H.E.B.

88 Platted  
0 Built

233 Platted  
103 Built

126 Platted  
42 Built

130 Platted  
130 Built

378 Platted  
23 Built

151 Platted  
132 Built

Chili's  
IHOP  
McDonalds

Roomstore

46 Platted  
46 Built

106 Platted  
46 Built

102 Platted

Lowe's

IH-35  
(68,000 Cars)

S. 31st Street  
(30,000 Cars)

Staples  
Ross  
Marshalls  
Bed Bath & Beyond  
Goody's  
Petco  
Hobby Lobby  
Shoe Carnival  
Lifeway Christian

H.E.B.  
Bealls  
Pier 1 Imports  
Circuit City

176 Platted  
176 Built

73 Platted  
0 Built

Dillard's  
Foley's  
JC Penney  
Academy  
Sam's Club  
Wal-Mart  
Premiere Cinema  
Fuddrucker's

158 Platted  
96 Built

416 Platted  
101 Built

18 Platted  
0 Built

21 Platted  
11 Built

Belton

75 Platted  
0 Built

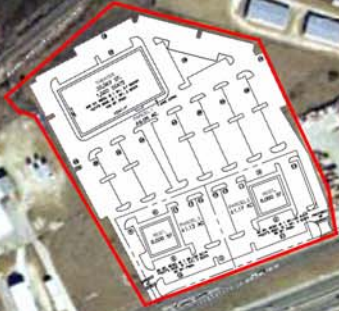


Loop 363

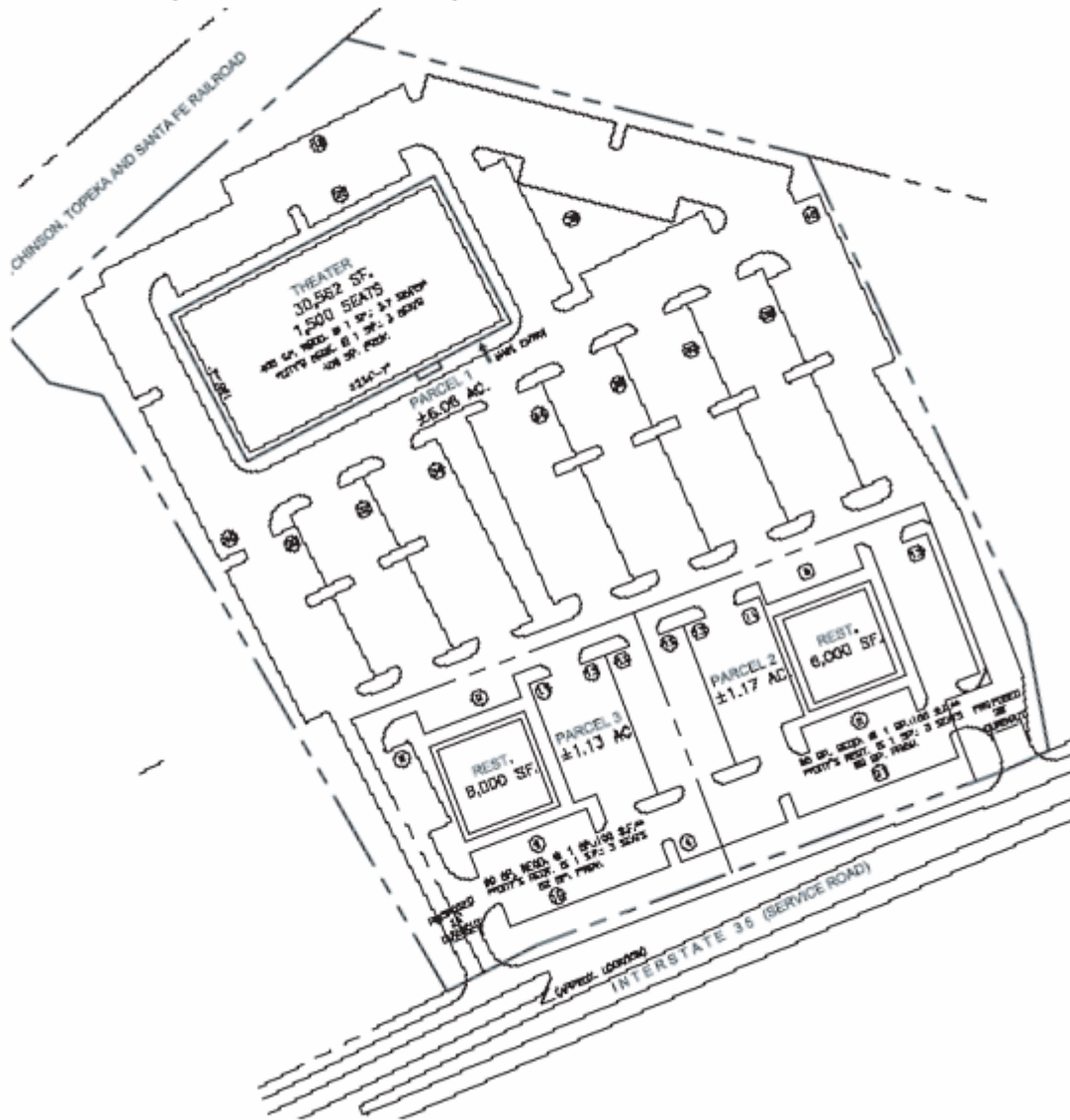
Bird Creek Crossing



IH-35



# EXISTING, CITY APPROVED, CINEMARK SITE PLAN



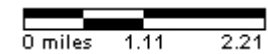
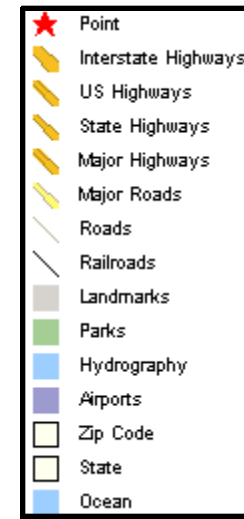
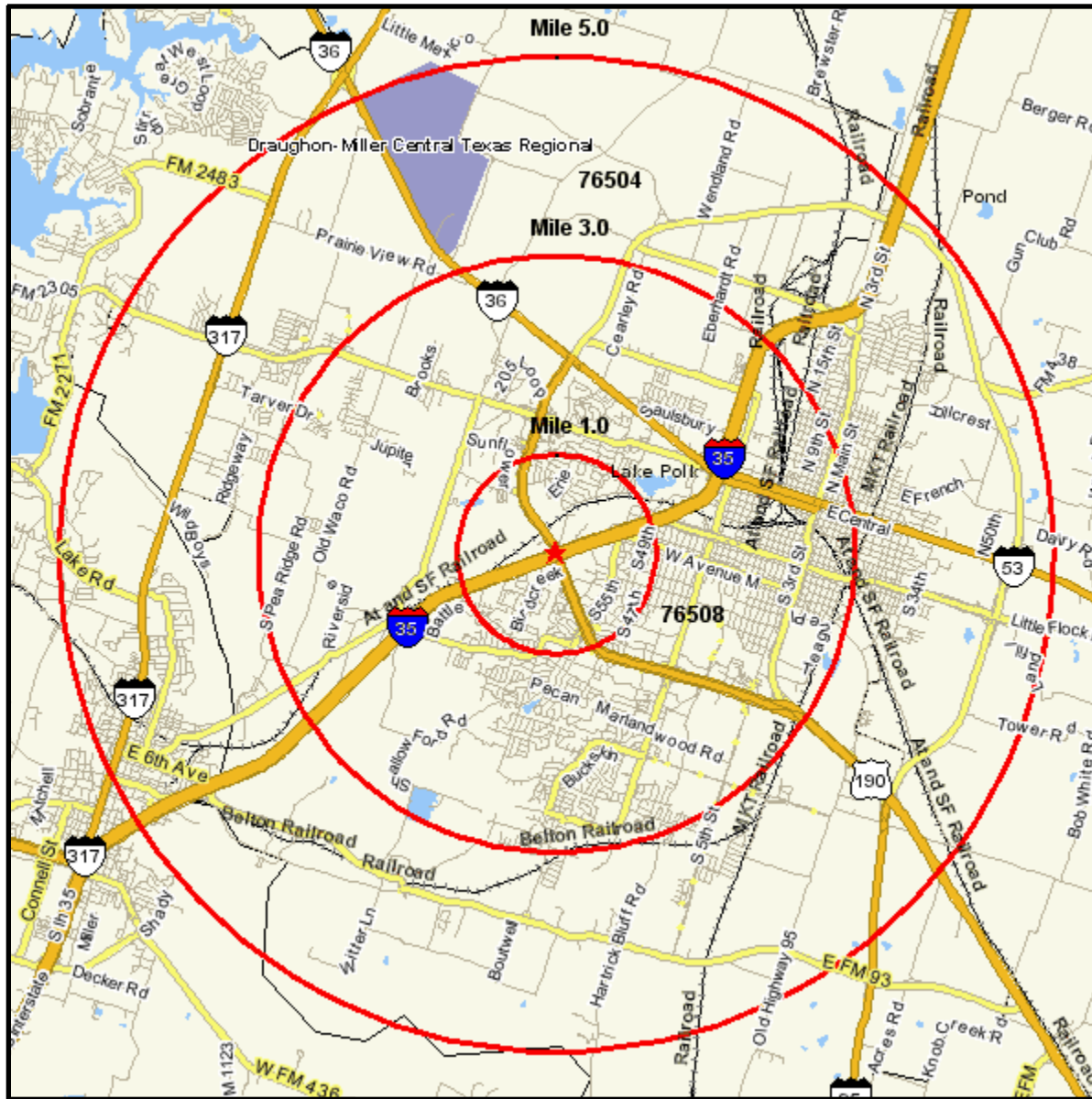
All work all information furnished hereon is for general information only and is not intended to be relied upon for any specific purpose.

# Area Map

Prepared For:

Order #: 967544487  
Site: 11

I 35 AT SW H K DODGEN LOOP  
TEMPLE, TX 76501  
Coord: 31.090617, -97.387082  
Radius - See Appendix for Details



# Pop-Facts: Census Demographic Overview Report

**Radius 1: I 35 AT SW H K DODGEN LOOP, TEMPLE, TX 76501, aggregate**

**Radius 2: I 35 AT SW H K DODGEN LOOP, TEMPLE, TX 76501, aggregate**

**Radius 3: I 35 AT SW H K DODGEN LOOP, TEMPLE, TX 76501, aggregate**

Description	0.00 - 1.00 miles <i>Radius 1</i>		0.00 - 3.00 miles <i>Radius 2</i>		0.00 - 5.00 miles <i>Radius 3</i>	
	%	%	%	%		
<b>Population</b>						
2013 Projection	6,235		42,485		64,883	
2008 Estimate	6,311		41,441		62,815	
2000 Census	6,682		41,269		61,682	
1990 Census	6,021		36,729		54,977	
Growth 1990-2000	10.98%		12.36%		12.20%	
<b>2000 Population by Single Race Classification</b>						
	6,682		41,269		61,682	
White Alone	5,509	82.45	30,054	72.82	44,243	71.73
Black or African American Alone	529	7.92	5,768	13.98	9,054	14.68
American Indian and Alaska Native Alone	23	0.34	208	0.50	327	0.53
Asian Alone	131	1.96	729	1.77	894	1.45
Native Hawaiian and Other Pacific Islander Alone	2	0.03	40	0.10	59	0.10
Some Other Race Alone	369	5.52	3,498	8.48	5,682	9.21
Two or More Races	119	1.78	973	2.36	1,422	2.31
<b>2000 Population Hispanic or Latino by Origin</b>						
	6,682		41,269		61,682	
Not Hispanic or Latino	5,892	88.18	34,250	82.99	50,877	82.48
Hispanic or Latino:	790	11.82	7,019	17.01	10,804	17.52
Mexican	581	73.54	5,222	74.40	8,093	74.91
Puerto Rican	40	5.06	301	4.29	403	3.73
Cuban	0	0.00	18	0.26	33	0.31
All Other Hispanic or Latino	168	21.27	1,477	21.04	2,275	21.06
<b>2000 Hispanic or Latino by Single Race Class.</b>						
	790		7,019		10,804	
White Alone	361	45.70	2,933	41.79	4,208	38.95
Black or African American Alone	12	1.52	130	1.85	180	1.67
American Indian and Alaska Native Alone	6	0.76	63	0.90	102	0.94
Asian Alone	1	0.13	15	0.21	27	0.25
Native Hawaiian and Other Pacific Islander Alone	0	0.00	13	0.19	17	0.16
Some Other Race Alone	363	45.95	3,444	49.07	5,623	52.05
Two or More Races	46	5.82	420	5.98	648	6.00
<b>2000 Population by Sex</b>						
	6,682		41,269		61,682	
Male	3,151	47.16	19,690	47.71	29,496	47.82
Female	3,531	52.84	21,579	52.29	32,186	52.18
Male/Female Ratio	0.89		0.91		0.92	



## Pop-Facts: Census Demographic Overview Report

**Radius 1: I 35 AT SW H K DODGEN LOOP, TEMPLE, TX 76501, aggregate**

**Radius 2: I 35 AT SW H K DODGEN LOOP, TEMPLE, TX 76501, aggregate**

**Radius 3: I 35 AT SW H K DODGEN LOOP, TEMPLE, TX 76501, aggregate**

Description	0.00 - 1.00 miles		0.00 - 3.00 miles		0.00 - 5.00 miles	
	<i>Radius 1</i>	%	<i>Radius 2</i>	%	<i>Radius 3</i>	%
<b>2000 Population by Age</b>	6,682		41,269		61,682	
Age 0 - 4	444	6.64	3,167	7.67	4,643	7.53
Age 5 - 9	444	6.64	2,944	7.13	4,467	7.24
Age 10 - 14	432	6.47	2,771	6.71	4,382	7.10
Age 15 - 17	268	4.01	1,626	3.94	2,592	4.20
Age 18 - 20	246	3.68	1,754	4.25	2,930	4.75
Age 21 - 24	347	5.19	2,331	5.65	3,320	5.38
Age 25 - 34	945	14.14	6,034	14.62	8,472	13.73
Age 35 - 44	973	14.56	5,850	14.18	8,847	14.34
Age 45 - 49	464	6.94	2,557	6.20	3,926	6.36
Age 50 - 54	360	5.39	2,342	5.67	3,629	5.88
Age 55 - 59	306	4.58	1,776	4.30	2,698	4.37
Age 60 - 64	273	4.09	1,401	3.39	2,130	3.45
Age 65 - 74	563	8.43	2,935	7.11	4,365	7.08
Age 75 - 84	470	7.03	2,599	6.30	3,664	5.94
Age 85 and over	146	2.18	1,184	2.87	1,619	2.62
Age 16 and over	5,267	78.82	31,865	77.21	47,355	76.77
Age 18 and over	5,094	76.23	30,761	74.54	45,598	73.92
Age 21 and over	4,847	72.54	29,007	70.29	42,669	69.18
Age 65 and over	1,179	17.64	6,717	16.28	9,648	15.64
<b>2000 Median Age</b>	37.21		35.02		35.04	
<b>2000 Average Age</b>	38.90		37.46		37.14	



## Pop-Facts: Census Demographic Overview Report

**Radius 1: I 35 AT SW H K DODGEN LOOP, TEMPLE, TX 76501, aggregate**

**Radius 2: I 35 AT SW H K DODGEN LOOP, TEMPLE, TX 76501, aggregate**

**Radius 3: I 35 AT SW H K DODGEN LOOP, TEMPLE, TX 76501, aggregate**

Description	0.00 - 1.00 miles		0.00 - 3.00 miles		0.00 - 5.00 miles	
	Radius 1	%	Radius 2	%	Radius 3	%
<b>2000 Male Population by Age</b>	3,151		19,690		29,496	
Age 0 - 4	228	7.24	1,630	8.28	2,396	8.12
Age 5 - 9	221	7.01	1,485	7.54	2,277	7.72
Age 10 - 14	225	7.14	1,423	7.23	2,252	7.63
Age 15 - 17	143	4.54	851	4.32	1,360	4.61
Age 18 - 20	114	3.62	844	4.29	1,378	4.67
Age 21 - 24	157	4.98	1,065	5.41	1,552	5.26
Age 25 - 34	458	14.54	2,969	15.08	4,170	14.14
Age 35 - 44	479	15.20	2,910	14.78	4,372	14.82
Age 45 - 49	234	7.43	1,241	6.30	1,878	6.37
Age 50 - 54	163	5.17	1,135	5.76	1,779	6.03
Age 55 - 59	132	4.19	855	4.34	1,310	4.44
Age 60 - 64	125	3.97	644	3.27	968	3.28
Age 65 - 74	240	7.62	1,298	6.59	1,925	6.53
Age 75 - 84	192	6.09	1,016	5.16	1,431	4.85
Age 85 and over	39	1.24	324	1.65	449	1.52
<b>2000 Median Age, Male</b>	35.61		33.58		33.47	
<b>2000 Average Age, Male</b>	37.07		35.65		35.37	
<b>2000 Female Population by Age</b>	3,531		21,579		32,186	
Age 0 - 4	216	6.12	1,538	7.13	2,248	6.98
Age 5 - 9	223	6.32	1,458	6.76	2,189	6.80
Age 10 - 14	207	5.86	1,348	6.25	2,130	6.62
Age 15 - 17	125	3.54	775	3.59	1,232	3.83
Age 18 - 20	132	3.74	910	4.22	1,552	4.82
Age 21 - 24	191	5.41	1,265	5.86	1,768	5.49
Age 25 - 34	487	13.79	3,064	14.20	4,303	13.37
Age 35 - 44	495	14.02	2,940	13.62	4,475	13.90
Age 45 - 49	230	6.51	1,315	6.09	2,047	6.36
Age 50 - 54	197	5.58	1,207	5.59	1,850	5.75
Age 55 - 59	174	4.93	921	4.27	1,388	4.31
Age 60 - 64	147	4.16	757	3.51	1,162	3.61
Age 65 - 74	323	9.15	1,636	7.58	2,440	7.58
Age 75 - 84	278	7.87	1,583	7.34	2,233	6.94
Age 85 and over	107	3.03	860	3.99	1,170	3.64
<b>2000 Median Age, Female</b>	38.74		36.47		36.50	
<b>2000 Average Age, Female</b>	40.53		39.12		38.76	



## Pop-Facts: Census Demographic Overview Report

**Radius 1: I 35 AT SW H K DODGEN LOOP, TEMPLE, TX 76501, aggregate**

**Radius 2: I 35 AT SW H K DODGEN LOOP, TEMPLE, TX 76501, aggregate**

**Radius 3: I 35 AT SW H K DODGEN LOOP, TEMPLE, TX 76501, aggregate**

Description	0.00 - 1.00 miles		0.00 - 3.00 miles		0.00 - 5.00 miles	
	<i>Radius 1</i>	%	<i>Radius 2</i>	%	<i>Radius 3</i>	%
<b>2000 Population Age 15+ by Marital Status</b>	5,397		32,401		48,303	
Total, Never Married	1,178	21.83	7,282	22.47	10,858	22.48
Married, Spouse present	2,969	55.01	16,338	50.42	24,848	51.44
Married, Spouse absent	223	4.13	2,157	6.66	3,122	6.46
Widowed	390	7.23	2,713	8.37	3,961	8.20
Divorced	636	11.78	3,911	12.07	5,515	11.42
Males, Never Married	599	11.10	4,012	12.38	5,951	12.32
Previously Married	269	4.98	2,198	6.78	3,118	6.46
Females, Never Married	579	10.73	3,270	10.09	4,908	10.16
Previously Married	758	14.04	4,425	13.66	6,357	13.16
<b>2000 Population Age 25+ by Educational Attainment</b>	4,500		26,677		39,349	
Less than 9th grade	184	4.09	2,043	7.66	3,453	8.78
Some High School, no diploma	403	8.96	2,996	11.23	4,583	11.65
High School Graduate (or GED)	1,163	25.84	6,840	25.64	10,186	25.89
Some College, no degree	992	22.04	6,367	23.87	9,184	23.34
Associate Degree	368	8.18	2,044	7.66	2,922	7.43
Bachelor's Degree	906	20.13	3,919	14.69	5,817	14.78
Master's Degree	252	5.60	1,247	4.67	1,862	4.73
Professional School Degree	186	4.13	1,008	3.78	1,264	3.21
Doctorate Degree	35	0.78	201	0.75	283	0.72
<b>Households</b>						
2013 Projection	2,838		17,762		26,089	
2008 Estimate	2,811		17,073		24,916	
2000 Census	2,865		16,681		24,060	
1990 Census	2,477		14,685		21,305	
Growth 1990-2000	15.66%		13.59%		12.93%	
<b>2000 Households by Household Type</b>	2,865		16,681		24,060	
Family Households	1,878	65.55	10,635	63.76	15,936	66.23
Nonfamily Households	987	34.45	6,046	36.24	8,123	33.76
<b>2000 Group Quarters Population</b>	74		1,701		2,608	
<b>2000 Households Hispanic or Latino</b>	224	7.82	2,153	12.91	3,205	13.32



# Pop-Facts: Census Demographic Overview Report

**Radius 1: I 35 AT SW H K DODGEN LOOP, TEMPLE, TX 76501, aggregate**

**Radius 2: I 35 AT SW H K DODGEN LOOP, TEMPLE, TX 76501, aggregate**

**Radius 3: I 35 AT SW H K DODGEN LOOP, TEMPLE, TX 76501, aggregate**

Description	0.00 - 1.00 miles		0.00 - 3.00 miles		0.00 - 5.00 miles	
	Radius 1	%	Radius 2	%	Radius 3	%
<b>2000 Households by Household Size</b>	2,865		16,681		24,060	
1-person household	845	29.49	5,233	31.37	6,989	29.05
2-person household	1,087	37.94	5,496	32.95	7,946	33.03
3-person household	398	13.89	2,552	15.30	3,803	15.81
4-person household	358	12.50	2,091	12.54	3,171	13.18
5-person household	123	4.29	838	5.02	1,349	5.61
6-person household	39	1.36	307	1.84	502	2.09
7 or more person household	15	0.52	163	0.98	299	1.24
<b>2000 Average Household Size</b>	2.31		2.37		2.46	
<b>2000 Households by Household Income</b>	2,811		16,613		24,071	
Income Less than \$15,000	291	10.35	3,025	18.21	4,620	19.19
Income \$15,000 - \$24,999	436	15.51	2,561	15.42	3,541	14.71
Income \$25,000 - \$34,999	408	14.51	2,621	15.78	3,696	15.35
Income \$35,000 - \$49,999	568	20.21	3,009	18.11	4,236	17.60
Income \$50,000 - \$74,999	592	21.06	2,840	17.10	4,205	17.47
Income \$75,000 - \$99,999	250	8.89	1,239	7.46	1,849	7.68
Income \$100,000 - \$149,999	169	6.01	706	4.25	1,081	4.49
Income \$150,000 - \$249,999	88	3.13	412	2.48	569	2.36
Income \$250,000 - \$499,999	8	0.28	123	0.74	172	0.71
Income \$500,000 or more	2	0.07	78	0.47	102	0.42
<b>2000 Average Household Income</b>	\$55,793		\$47,805		\$47,908	
<b>2000 Median Household Income</b>	\$42,157		\$35,501		\$35,634	
<b>2000 Per Capita Income</b>	\$23,902		\$19,744		\$19,136	
<b>2000 Household Type, Presence of Own Children</b>	2,865		16,681		24,060	
Single Male Householder	320	11.17	2,182	13.08	2,848	11.84
Single Female Householder	525	18.32	3,051	18.29	4,142	17.22
Married-Couple Family, own children	607	21.19	3,472	20.81	5,239	21.77
Married-Couple Family, no own children	900	31.41	4,449	26.67	6,639	27.59
Male Householder, own children	51	1.78	290	1.74	427	1.77
Male Householder, no own children	30	1.05	250	1.50	415	1.72
Female Householder, own children	184	6.42	1,470	8.81	2,108	8.76
Female Householder, no own children	105	3.66	705	4.23	1,108	4.61
Nonfamily, Male Householder	77	2.69	458	2.75	625	2.60
Nonfamily, Female Householder	64	2.23	356	2.13	509	2.12



## Pop-Facts: Census Demographic Overview Report

**Radius 1: I 35 AT SW H K DODGEN LOOP, TEMPLE, TX 76501, aggregate**

**Radius 2: I 35 AT SW H K DODGEN LOOP, TEMPLE, TX 76501, aggregate**

**Radius 3: I 35 AT SW H K DODGEN LOOP, TEMPLE, TX 76501, aggregate**

Description	0.00 - 1.00 miles		0.00 - 3.00 miles		0.00 - 5.00 miles	
	Radius 1	%	Radius 2	%	Radius 3	%
<b>2000 Households by Presence of People</b>	2,865		16,681		24,060	

### Households with 1 or more People under Age 18:

Married-Couple Family	626	21.85	3,665	21.97	5,573	23.16
Other Family, Male Householder	54	1.88	334	2.00	508	2.11
Other Family, Female Householder	211	7.36	1,652	9.90	2,424	10.07
Nonfamily, Male Householder	8	0.28	47	0.28	74	0.31
Nonfamily, Female Householder	2	0.07	15	0.09	21	0.09

### Households no People under Age 18:

Married-Couple Family	882	30.79	4,256	25.51	6,305	26.21
Other Family, Male Householder	27	0.94	205	1.23	334	1.39
Other Family, Female Householder	78	2.72	522	3.13	792	3.29
Nonfamily, Male Householder	389	13.58	2,592	15.54	3,398	14.12
Nonfamily, Female Householder	588	20.52	3,391	20.33	4,630	19.24

### 2000 Households by Number of Vehicles

No Vehicles	99	3.46	1,655	9.92	2,408	10.01
1 Vehicle	1,153	40.24	6,816	40.86	9,199	38.23
2 Vehicles	1,206	42.09	6,263	37.55	9,307	38.68
3 Vehicles	287	10.02	1,538	9.22	2,392	9.94
4 Vehicles	61	2.13	339	2.03	607	2.52
5 or more Vehicles	8	0.28	75	0.45	145	0.60

### 2000 Average Number of Vehicles

	1.65		1.54		1.59	
--	------	--	------	--	------	--

### 2000 Families by Poverty Status

	1,843		10,657		15,968	
--	-------	--	--------	--	--------	--

### Income At or Above Poverty Level:

Married-Couple Family, own children	637	34.56	3,575	33.55	5,486	34.36
Married-Couple Family, no own children	822	44.60	4,186	39.28	6,248	39.13
Male Householder, own children	76	4.12	287	2.69	417	2.61
Male Householder, no own children	28	1.52	168	1.58	290	1.82
Female Householder, own children	140	7.60	964	9.05	1,329	8.32
Female Householder, no own children	78	4.23	441	4.14	574	3.59

### Income Below Poverty Level:

Married-Couple Family, own children	0	0.00	237	2.22	384	2.40
Married-Couple Family, no own children	2	0.11	92	0.86	139	0.87
Male Householder, own children	2	0.11	51	0.48	93	0.58
Male Householder, no own children	1	0.05	43	0.40	51	0.32
Female Householder, own children	58	3.15	586	5.50	886	5.55
Female Householder, no own children	0	0.00	26	0.24	70	0.44



## Pop-Facts: Census Demographic Overview Report

**Radius 1: I 35 AT SW H K DODGEN LOOP, TEMPLE, TX 76501, aggregate**

**Radius 2: I 35 AT SW H K DODGEN LOOP, TEMPLE, TX 76501, aggregate**

**Radius 3: I 35 AT SW H K DODGEN LOOP, TEMPLE, TX 76501, aggregate**

Description	0.00 - 1.00 miles		0.00 - 3.00 miles		0.00 - 5.00 miles	
	<i>Radius 1</i>	%	<i>Radius 2</i>	%	<i>Radius 3</i>	%
<b>2000 Population Age 16+ by Employment Status</b>	5,270		31,833		47,397	
In Armed Forces	95	1.80	480	1.51	639	1.35
Civilian - Employed	3,238	61.44	18,316	57.54	27,011	56.99
Civilian - Unemployed	178	3.38	979	3.08	1,628	3.43
Not in Labor Force	1,759	33.38	12,059	37.88	18,118	38.23
<b>2000 Civilian Employed Pop. Age 16+ by Occupation</b>	3,238		18,316		27,011	
Management, Business and Financial Operations	461	14.24	2,146	11.72	3,035	11.24
Professional and Related Occupations	919	28.38	4,358	23.79	6,302	23.33
Service	397	12.26	2,999	16.37	4,337	16.06
Sales and Office	923	28.51	4,697	25.64	6,821	25.25
Farming, Fishing and Forestry	7	0.22	21	0.11	46	0.17
Construction, Extraction, and Maintenance	186	5.74	1,248	6.81	2,126	7.87
Production, Transportation, and Material Moving	346	10.69	2,847	15.54	4,344	16.08
<b>2000 Pop. Age 16+ by Occupation Classification</b>	3,238		18,316		27,011	
Blue Collar	532	16.43	4,095	22.36	6,470	23.95
Service and Farm	428	13.22	3,086	16.85	4,465	16.53
White Collar	2,279	70.38	11,135	60.79	16,076	59.52
<b>2000 Workers Age 16+, Transportation To Work</b>	3,296		18,460		27,202	
Drove Alone	2,840	86.17	14,861	80.50	21,762	80.00
Car Pooled	364	11.04	2,523	13.67	3,890	14.30
Public Transportation	4	0.12	64	0.35	78	0.29
Walked	26	0.79	542	2.94	763	2.80
Motorcycle	1	0.03	15	0.08	21	0.08
Bicycle	7	0.21	17	0.09	59	0.22
Other Means	11	0.33	108	0.59	127	0.47
Worked at Home	42	1.27	330	1.79	503	1.85
<b>2000 Workers Age 16+ by Travel Time to Work</b>	3,253		18,130		26,700	
Less than 15 Minutes	2,018	62.04	10,056	55.47	13,833	51.81
15 - 29 Minutes	700	21.52	5,055	27.88	8,268	30.97
30 - 44 Minutes	322	9.90	1,585	8.74	2,347	8.79
45 - 59 Minutes	103	3.17	614	3.39	928	3.48
60 or more Minutes	110	3.38	820	4.52	1,323	4.96
<b>2000 Average Travel Time to Work in Minutes</b>	18.03		19.37		20.10	



## Pop-Facts: Census Demographic Overview Report

**Radius 1: I 35 AT SW H K DODGEN LOOP, TEMPLE, TX 76501, aggregate**

**Radius 2: I 35 AT SW H K DODGEN LOOP, TEMPLE, TX 76501, aggregate**

**Radius 3: I 35 AT SW H K DODGEN LOOP, TEMPLE, TX 76501, aggregate**

Description	0.00 - 1.00 miles		0.00 - 3.00 miles		0.00 - 5.00 miles	
	<i>Radius 1</i>	%	<i>Radius 2</i>	%	<i>Radius 3</i>	%
<b>2000 Tenure of Occupied Housing Units</b>	2,865		16,681		24,060	
Owner Occupied	1,657	57.84	8,559	51.31	13,750	57.15
Renter Occupied	1,208	42.16	8,122	48.69	10,310	42.85
<b>2000 Occ Housing Units, Avg Length of Residence</b>	10		8		9	
<b>2000 Tenure By Age of Householder</b>	2,814		16,686		24,058	
<b>Owner Occupied</b>	1,587		8,567		13,735	
Householder 15 to 24 Years	0	0.00	114	1.33	205	1.49
Householder 25 to 34 Years	125	7.88	1,069	12.48	1,562	11.37
Householder 35 to 44 Years	247	15.56	1,410	16.46	2,523	18.37
Householder 45 to 54 Years	358	22.56	1,971	23.01	3,004	21.87
Householder 55 to 59 Years	125	7.88	622	7.26	1,034	7.53
Householder 60 to 64 Years	106	6.68	565	6.60	911	6.63
Householder 65 to 74 Years	312	19.66	1,299	15.16	2,118	15.42
Householder 75 to 84 Years	271	17.08	1,207	14.09	1,872	13.63
Householder 85 and over	43	2.71	311	3.63	505	3.68
<b>Renter Occupied</b>	1,227		8,119		10,323	
Householder 15 to 24 Years	148	12.06	1,173	14.45	1,387	13.44
Householder 25 to 34 Years	432	35.21	2,286	28.16	2,869	27.79
Householder 35 to 44 Years	197	16.06	1,504	18.52	2,084	20.19
Householder 45 to 54 Years	173	14.10	1,175	14.47	1,513	14.66
Householder 55 to 59 Years	30	2.44	264	3.25	395	3.83
Householder 60 to 64 Years	34	2.77	322	3.97	390	3.78
Householder 65 to 74 Years	84	6.85	472	5.81	600	5.81
Householder 75 to 84 Years	92	7.50	545	6.71	634	6.14
Householder 85 and over	37	3.02	377	4.64	451	4.37



## Pop-Facts: Census Demographic Overview Report

**Radius 1: I 35 AT SW H K DODGEN LOOP, TEMPLE, TX 76501, aggregate**

**Radius 2: I 35 AT SW H K DODGEN LOOP, TEMPLE, TX 76501, aggregate**

**Radius 3: I 35 AT SW H K DODGEN LOOP, TEMPLE, TX 76501, aggregate**

Description	0.00 - 1.00 miles <i>Radius 1</i>		0.00 - 3.00 miles <i>Radius 2</i>		0.00 - 5.00 miles <i>Radius 3</i>	
		%		%		%
<b>2000 Pop 65 and over by HH Type and Relationship</b>						
<b>Total for Pop 65 and over</b>	1,232		6,634		9,580	
<b>In Households:</b>	1,188		5,703		8,420	
In Family Households:	851	69.07	3,730	56.23	5,581	58.26
Householder	449	36.44	1,991	30.01	2,997	31.28
Male	367	29.79	1,680	25.32	2,560	26.72
Female	82	6.66	311	4.69	437	4.56
Spouse	355	28.81	1,435	21.63	2,152	22.46
Parent	20	1.62	182	2.74	248	2.59
Other Relatives	20	1.62	108	1.63	150	1.57
Nonrelatives	7	0.57	15	0.23	34	0.35
In Non-Family Households:	337	27.35	1,973	29.74	2,839	29.63
Male householder	49	3.98	365	5.50	542	5.66
Living Alone	48	3.90	343	5.17	486	5.07
Not Living Alone	1	0.08	22	0.33	56	0.58
Female Householder	281	22.81	1,561	23.53	2,229	23.27
Living Alone	281	22.81	1,535	23.14	2,199	22.95
Not Living Alone	0	0.00	26	0.39	30	0.31
Nonrelatives	7	0.57	47	0.71	68	0.71
<b>In Group Quarters:</b>	44		931		1,160	
Institutionalized population	44	3.57	879	13.25	1,088	11.36
Noninstitutionalized population	0	0.00	52	0.78	72	0.75
<b>2000 All Owner-Occupied Housing Values</b>						
Value Less than \$20,000	14	0.88	305	3.56	620	4.51
Value \$20,000 - \$39,999	80	5.04	852	9.95	1,740	12.67
Value \$40,000 - \$59,999	136	8.57	1,219	14.23	2,136	15.55
Value \$60,000 - \$79,999	433	27.28	2,098	24.49	3,121	22.72
Value \$80,000 - \$99,999	497	31.32	1,859	21.70	2,584	18.81
Value \$100,000 - \$149,999	276	17.39	1,250	14.59	2,008	14.62
Value \$150,000 - \$199,999	108	6.81	498	5.81	761	5.54
Value \$200,000 - \$299,999	27	1.70	256	2.99	430	3.13
Value \$300,000 - \$399,999	8	0.50	171	2.00	240	1.75
Value \$400,000 - \$499,999	6	0.38	23	0.27	34	0.25
Value \$500,000 - \$749,999	1	0.06	21	0.25	30	0.22
Value \$750,000 - \$999,999	0	0.00	0	0.00	11	0.08
Value \$1,000,000 or more	1	0.06	16	0.19	20	0.15
<b>2000 Median All Owner-Occupied Housing Value</b>	\$85,261		\$78,185		\$75,195	



## Pop-Facts: Census Demographic Overview Report

**Radius 1: I 35 AT SW H K DODGEN LOOP, TEMPLE, TX 76501, aggregate**

**Radius 2: I 35 AT SW H K DODGEN LOOP, TEMPLE, TX 76501, aggregate**

**Radius 3: I 35 AT SW H K DODGEN LOOP, TEMPLE, TX 76501, aggregate**

Description	0.00 - 1.00 miles		0.00 - 3.00 miles		0.00 - 5.00 miles	
	<i>Radius 1</i>	%	<i>Radius 2</i>	%	<i>Radius 3</i>	%
<b>2000 Housing Units by Units in Structure</b>	3,048		18,225		26,158	
1 Unit Attached	38	1.25	438	2.40	636	2.43
1 Unit Detached	1,977	64.86	10,850	59.53	17,057	65.21
2 Units	57	1.87	801	4.40	1,006	3.85
3 to 19 Units	571	18.73	3,054	16.76	3,676	14.05
20 to 49 Units	98	3.22	736	4.04	811	3.10
50 or More Units	239	7.84	1,863	10.22	2,038	7.79
Mobile Home or Trailer	17	0.56	469	2.57	913	3.49
Boat, RV, Van, etc	0	0.00	13	0.07	19	0.07
<b>2000 Housing Units by Year Built</b>	3,048		18,225		26,158	
Housing Units Built 1999 to March 2000	32	1.05	283	1.55	526	2.01
Housing Unit Built 1995 to 1998	221	7.25	1,518	8.33	2,183	8.35
Housing Unit Built 1990 to 1994	189	6.20	1,142	6.27	1,498	5.73
Housing Unit Built 1980 to 1989	630	20.67	4,178	22.92	5,141	19.65
Housing Unit Built 1970 to 1979	825	27.07	4,571	25.08	5,977	22.85
Housing Unit Built 1960 to 1969	603	19.78	2,583	14.17	3,763	14.39
Housing Unit Built 1950 to 1959	370	12.14	1,859	10.20	3,413	13.05
Housing Unit Built 1940 to 1949	92	3.02	1,097	6.02	1,898	7.26
Housing Unit Built 1939 or Earlier	36	1.18	993	5.45	1,756	6.71
<b>2000 Median Year Structure Built**</b>	1975		1976		1974	
<b>2000 Average Contract Rent</b>	\$508		\$469		\$443	

\*\*1939 will appear when at least half of the Housing Units in this reports area were built in 1939 or earlier.

